

LASER WELDING HANDHELD

- ⌚ *Long Time Continuous Welding*
- ⚙️ *Remarkable Smooth Wire Feeding*
- 🎯 *Enjoyable Work Experience*



NEVER COMPROMISE ON QUALITY

TRM®

PROVIDING SOLUTIONS TO YOUR CHALLENGE OF WELDING TASKS

Safe, No legal risk

- CE certificates issued by SGS
- Highest electrical safety - PL e
- Fully meet EU safety requirements

High quality welding

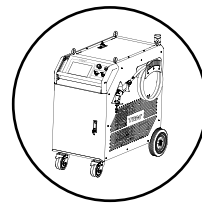
- Industrial heavy duty welding
- No undercut
- No wire sticking

Easy to operate

- Light torch, comfortable grip
- Expert Database, everyone can weld
- Complete technical documentations, training programs and support

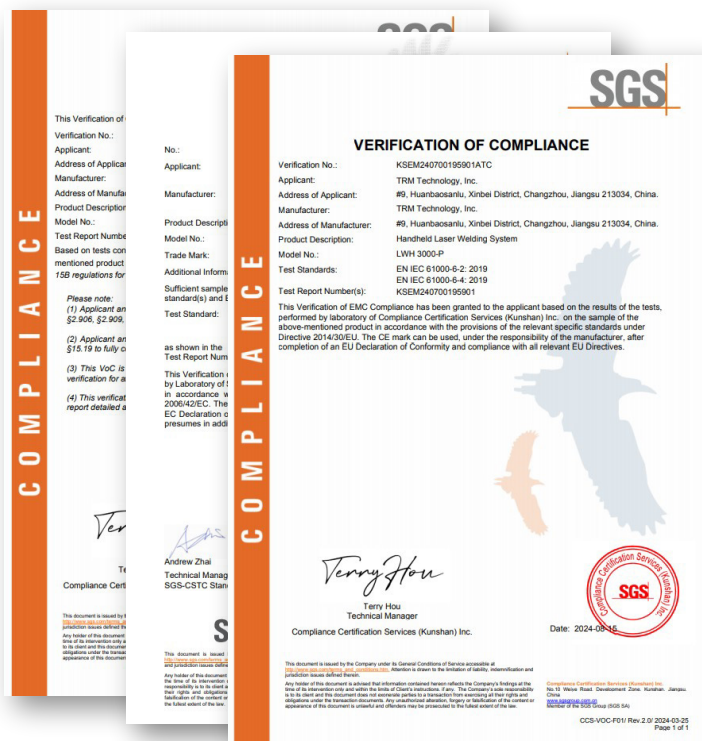
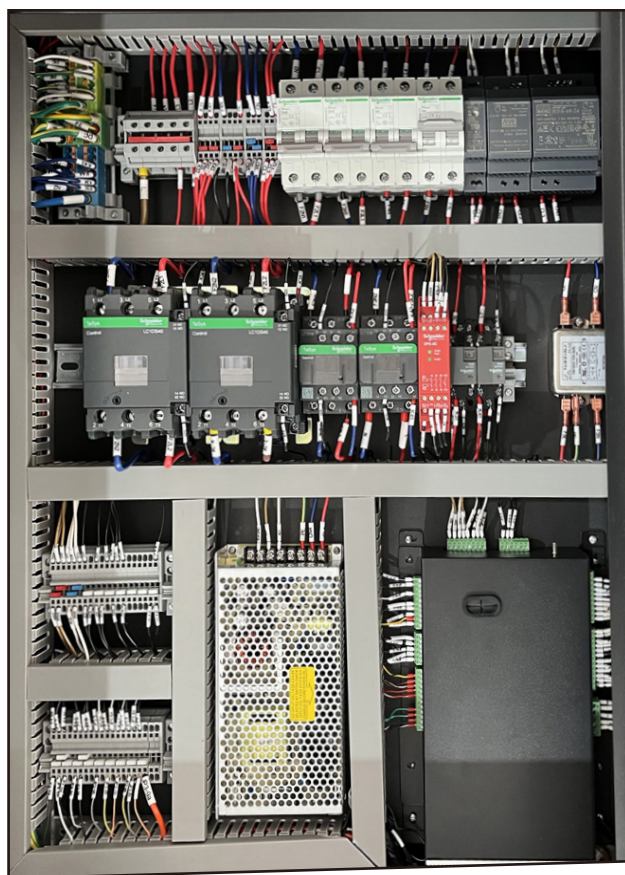
Highest electrical safety - PL e

- Dual safety contact input
- Dual safety loop output
- Safety relay

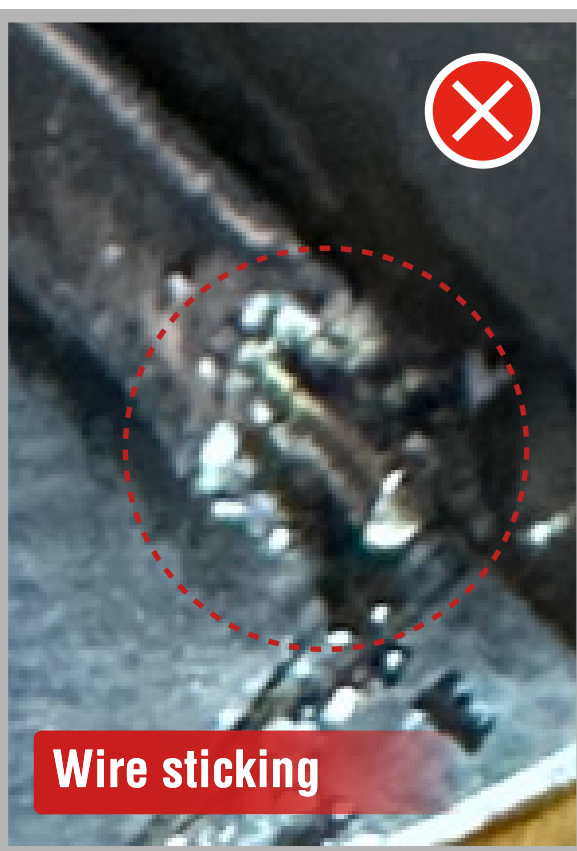


Safety interlocks

- Helmet
- Protection enclosure

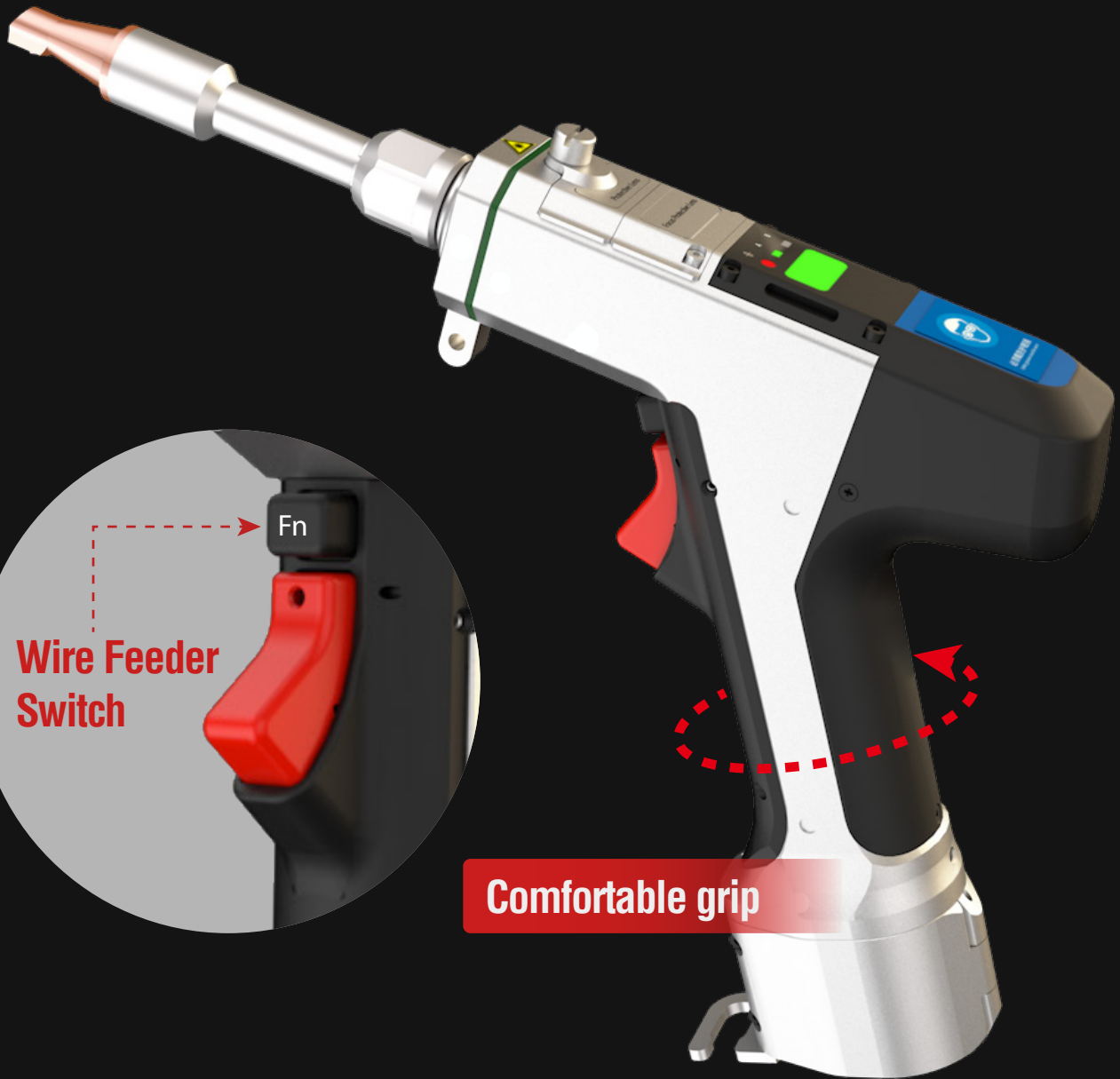
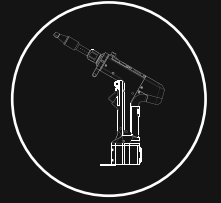


High quality welding performance



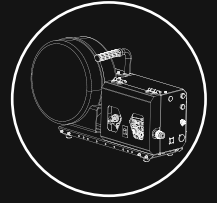
New TORCH ⚡

- Lighter weight
- Comfortable grip
- Wire feeder switch



Wire Feeder

- Straightener — No wire blockage
- Step Motor — High wire feeding accuracy
- CANBUS — Support up to 4 wire feeders at the same time



More Versatile

Multiple speed and work modes; can be used for both laser and arc welding



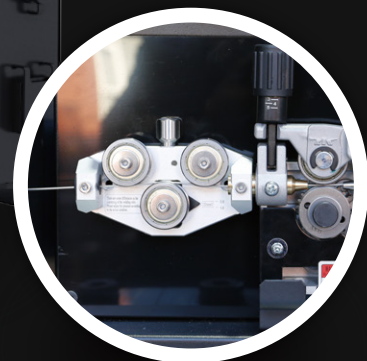
More precise control

Integrated stepper servo motor increases the control accuracy.



More stable wire feeding

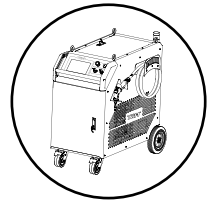
Two kinds of wire liners are available for 0.8-1.2mm & 1.6mm wires.



Smoother wire feeding

Equipped with a straightener, effectively reduced the occurrence of wire blockage.

Integrating chiller & wire feeder setup @ main HMI APP



- Friendly menu structure, easy to learn
- Setup the welder, wire feeder and chiller at one place, easy to use
- USB upgrade, Backup & Restore, easy to keep up-to-date



● **USB software upgrade**

● **USB Expert Database upgrade**

● **USB welding programs backup & restore**



Service

■ Comprehensive training programs

- Factory training
- Online training
- Site training

■ Prompt online support

■ Spare parts programs

■ Technical documentations and videos



TRM Water-Cooled Laser Welding Handheld

Specifications

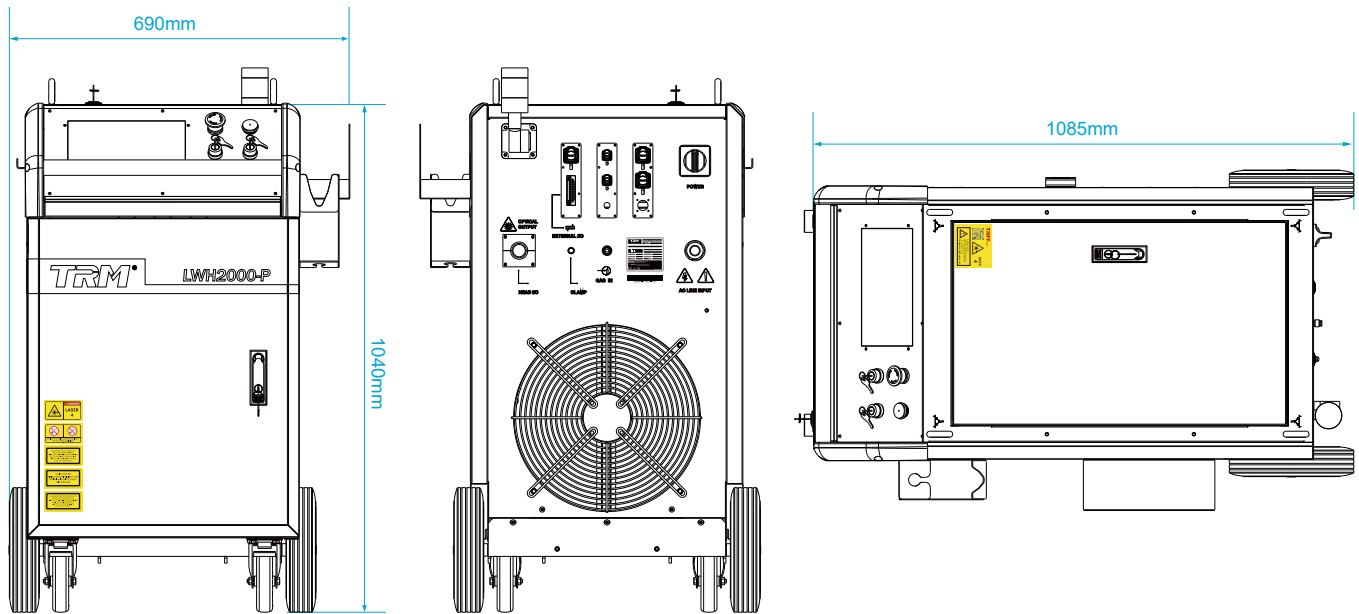
Model	LWH1500-P	LWH2000-P	LWH3000-P
Laser Media	Optical Fiber	Optical Fiber	Optical Fiber
AC Input Power	230V~ 41A 50/60Hz	230V~ 45A 50/60Hz	380V~ 40A 50/60Hz
Wavelength	1080±10nm	1080±10nm	1080±10nm
Laser Power	1500W	2000W	3000W
Cooling Method	Water Cooling	Water Cooling	Water Cooling
Laser Fiber Length	5m or 10m	5m or 10m	5m or 10m
Fiber Minimum Bending Radius	250mm	250mm	250mm
Shielding Gas	Argon, Nitrogen	Argon, Nitrogen	Argon, Nitrogen
Rated Power	8.8kw	11kw	15kw
Welding Machine (L*W*H)	1130*690*1040mm	1130*690*1040mm	1130*690*1040mm
Wire Feeder (L*W*H)	692*246*391mm	692*246*391mm	692*246*391mm
Weight	~ 195kg	~ 210kg	~ 210kg
Operating Environment Temperature	10 to 40℃	10 to 40℃	10 to 40℃
Workpiece Thickness (Suggested)	0.4-4mm	0.4-6mm	0.4-8mm
Wire Diameter	0.8/1/1.2/1.6mm	0.8/1/1.2/1.6mm	0.8/1/1.2/1.6mm
Refrigerant	R410A	R410A	R410A

Wire Feeder Specifications

Model	WF-01A
Rated Voltage	85-264VAC
Rated Current	2.6A/115VAC 1.3A/230VAC
Speed Range	0-20m/min
Drive Mode	Four Drive Rollers
Recommended Wire Diameter	0.8-1.6mm
Environmental Protection	IP2X
Product Weight	16.5kg

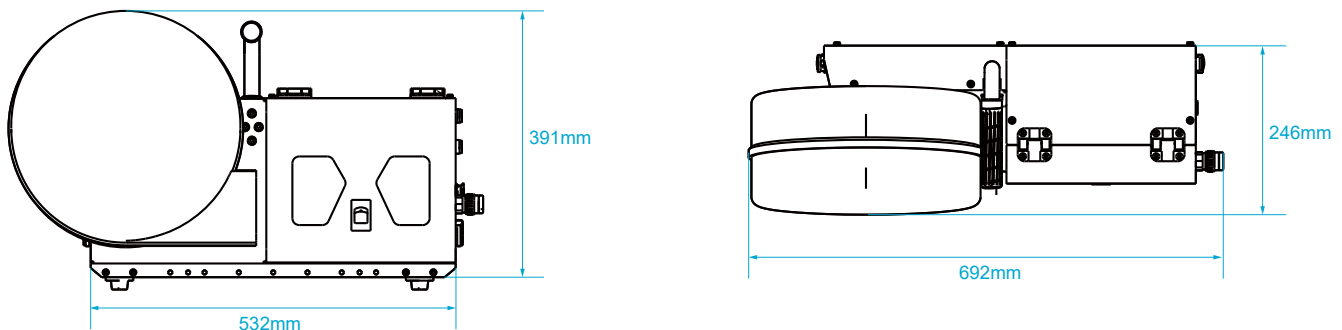
TRM Water-Cooled Laser Welding Handheld

Dimensions (unit:mm)



Wire Feeder

Dimensions (unit:mm)



The only way to be successful
in this booming laser market
is to choose a partner
who is **long-term vision**
and strong !

TRM is the ONE !



Download Catalogue Here.

TRM Technology, Inc.

Add:	#9, Huanbaosanlu, Xinbei District, Changzhou, Jiangsu 213034, China.
Tel:	+86 519 8577 7780
Fax:	+86 519 8577 7786
Web:	www.trm-welding.com
Email:	info@trm-welding.com

